

CELEBRATING OLMSTED: HOW IT BEGAN—RESCUE FROM OBSCURITY

Presented virtually at The Cosmos Club, Washington, DC, by Jane Loeffler, January 26, 2022 [jcloeffler@mac.com]

THIS PDF SHOWS ALL SLIDES IN PPT, FOLLOWED BY LIST OF IMAGES AND PHOTO CREDITS

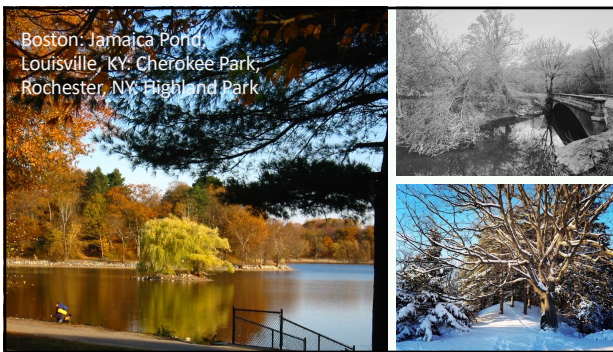
© JANE LOEFFLER



1



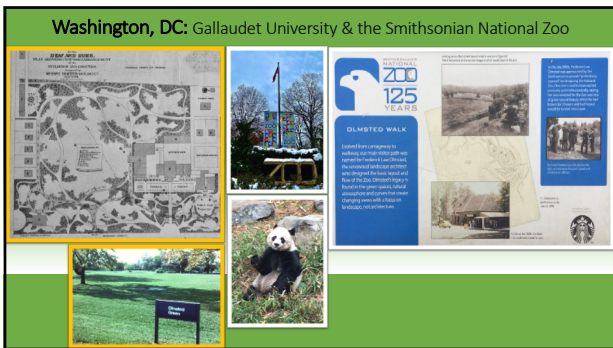
2



3



4



5

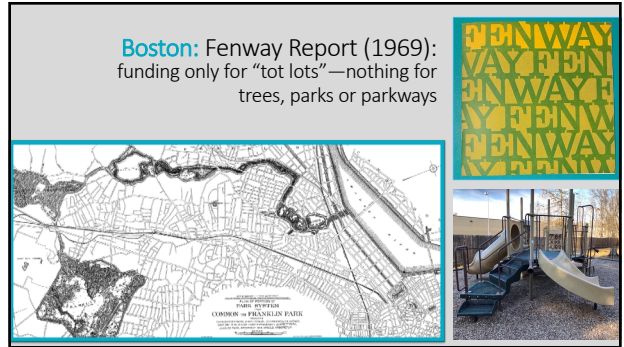


6



Olmsted's parks in the 1970's: erosion, neglect, graffiti, trash & danger

7



Boston: Fenway Report (1969): funding only for "tot lots"—nothing for trees, parks or parkways

8



Highlights from the Olmsted Bookshelf since 1973

9



Earth Day: first celebrated April 22, 1970

10



Sugarloaf Mountain: Frederick Gutheim

Gutheim, on his 80th birthday, with Dana White at GWU, 1988.


11




Dickerson, MD: "Mt. Ephraim," Gutheim house and 6-acre sheep farm

12

Setting Priorities for the 1972 Sesquicentennial




Paxton's Birkenhead Park, Liverpool, England, 1847, the first "public" park



Passive recreation:
Seurat, *A Sunday on La Grande Jatte*, 1886

Asking what are parks? and who are they for?



Active recreation:
Bicycling on the Gallaudet Campus

13

Riverside, IL: Olmsted's planned suburb (1869)



14

**Brookline, MA:
Olmsted home/office**




15

Corita Kent designs Sesquicentennial poster (1972)
Presented here to George Hartzog, National Park Service Director, 1972





Artist Corita Kent (formerly Sister Mary Corita), known to many for the famed Dorchester gas tank (Boston) (orig. 1971).




16

**Washington, DC:
U.S. Capitol Grounds/Terraces & Grotto**

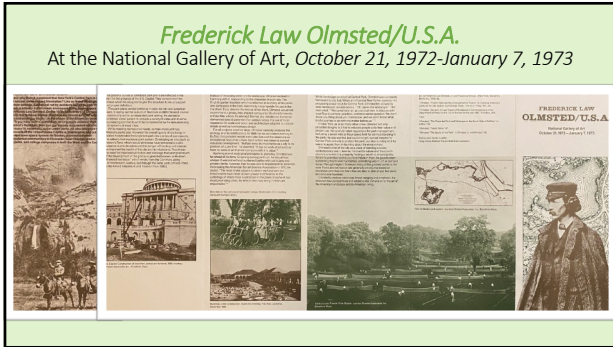


17

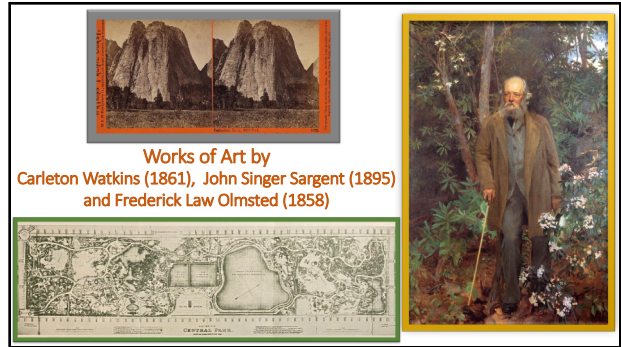
Promoting Olmsted's legacy and saving the West Front of the U.S. Capitol and the terraces and staircases — causes furthered by the Olmsted National Sesquicentennial Committee.



18



19



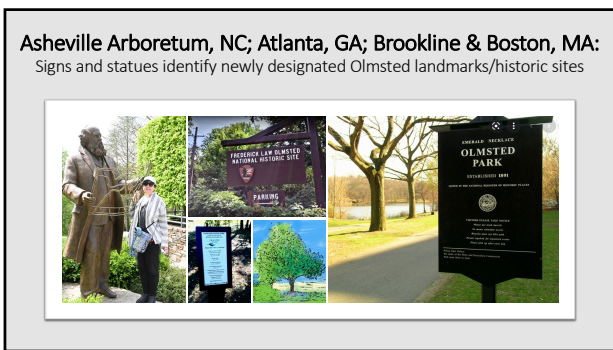
20



21



22



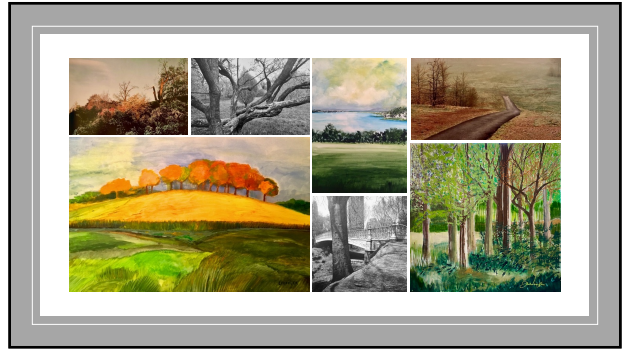
23



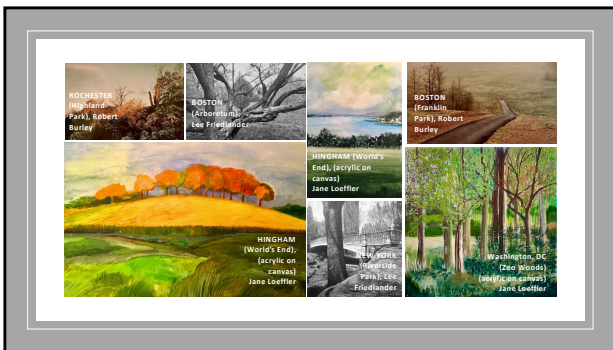
24



25



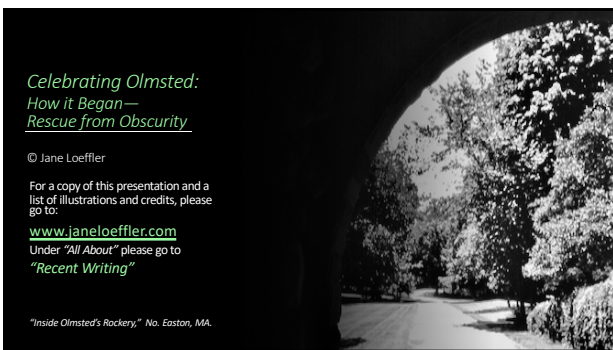
26



27



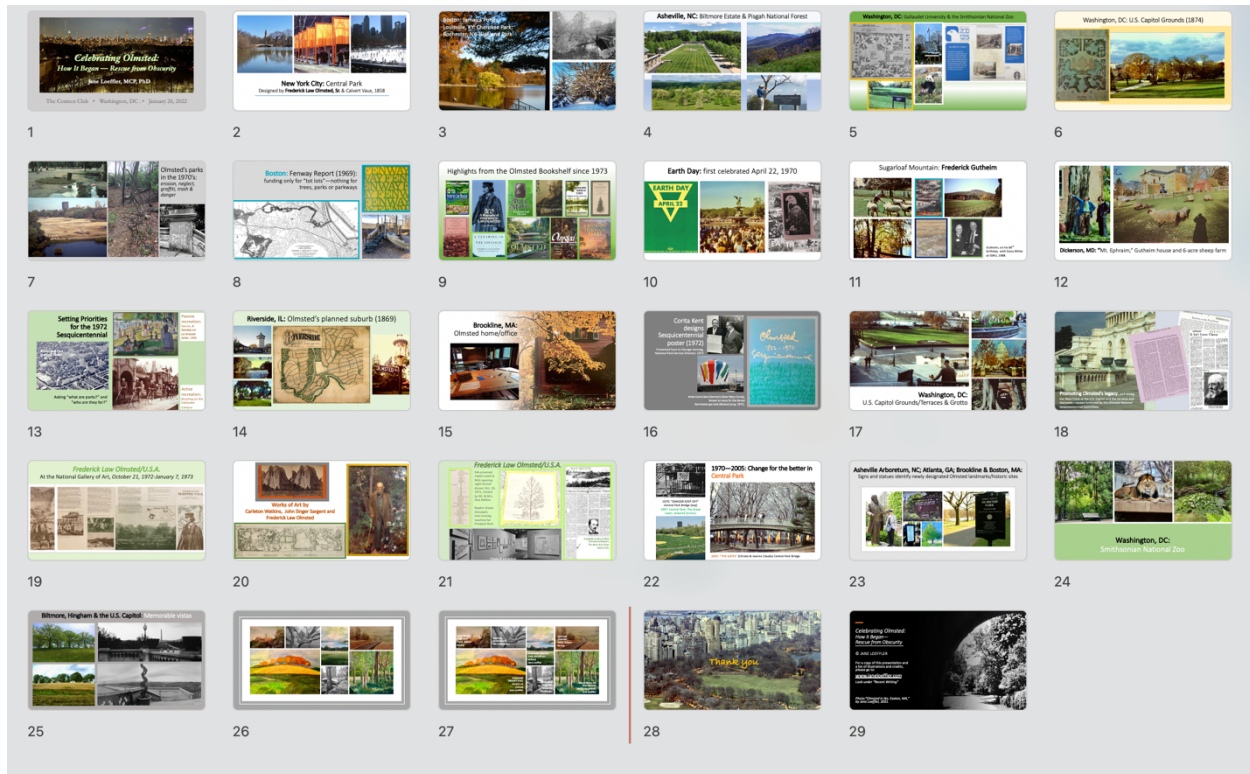
28



29

List of Illustrations and Credits for *Celebrating Olmsted: How it Began—Rescue from Obscurity*

Jane Loeffler, MCP, PhD
Cosmos Club, January 26, 2022



Slide 1: (1) **New York, Central Park** during exhibition of “The Gates,” (Christo & Jeanne Claude), Photo by Bob Loeffler, Feb. 2005.

Slide 2: **New York, Central Park** (1) Photo by Jane Loeffler, Feb. 2020; (2) Photo by Bob Loeffler, Feb. 2005; (3) Photo by J.D. Eiseman, Dec. 1969.

Slide 3: (1) **Boston, MA**, Jamaica Pond, Photo by Jane Loeffler, ND; (2) **Louisville, KY**, "Cherokee Park," Photo by Geoffrey James, 1993, Canadian Centre for Architecture; (3) **Rochester, NY**, Highland Park, Photo by M.A. Gaudioso, <https://www.highlandparkconservancy.org>.

Slide 4: **Asheville, NC** (1) Biltmore Estate, formal entrance court viewed from above, Photo by Charles Loeffler, April 2019; below left (2) Biltmore Estate, viewed from the house, Photo by Jane Loeffler, April 2019; top right (3) Pisgah National Forest, Photo by Bob Loeffler, April 2019; bottom right (4) Bob Loeffler at “Cradle of Forestry Overlook,” Photo by Jane Loeffler, April 2019.

Slide 5: **Washington, DC** (1) **Gallaudet Plan**; and below (2) “Olmsted Green,” at Gallaudet University, Photo © Woodbridge Williams, 1978; center (3) Entrance to **Smithsonian National Zoo**, Photo by Jane Loeffler, Jan. 2022, and (4) Panda, Photo by Jane Loeffler, Dec. 2019; right (5) “Olmsted Walk” sign from National Zoo: “...our main visitor path was named for Frederick Law Olmsted, the renowned landscape architect who designed the basic layout and flow of the Zoo. Olmsted’s legacy is found in the green spaces, natural atmosphere and curves that create changing views with a focus on landscape, not architecture.” Photos on the sign include the earliest image of what would become the Zoo, Olmsted discussing plans with Zoo officials, a preliminary study dated June, 2, 1890, and a photograph of the pedestrian pathway that was a road for carriages and then cars until the 1950s.

Slide 6: **Washington, DC, U.S. Capitol Grounds** (1) Grounds of the U.S. Capitol, Photo © Woodbridge Williams, 1978; (2) Olmsted’s plan for the U.S. Capitol Grounds (1874), Courtesy Architect of the Capitol.

Slide 7: **New York, Central Park** (1) The Mall, 1979, <https://www.centralparknyc.org/articles/central-park-history>; (2) The Great Lawn before restoration, <https://www.centralparknyc.org/articles/central-park-history>; **Washington, DC, Rock Creek Park** (3) Erosion, Photo by Jane Loeffler, Mar 2018; **New York, Central Park** (4) Graffiti, Photo by Jürgen Wagner/Timeline Images, Dec 31, 1972, <https://www.alamy.com/graffiti-with-the-inscription-crazy-cross-at-the-top-of-a-staircase-in-central-park-in-new-york-city-automated-translation-image350029502.html>.

Slide 8: **Boston, MA** (1) *Plan for Portion of Boston Park System*, Olmsted Archives, Frederick Law Olmsted National Historic Site; (2) *Fenway*, Booklet (report) by Jane (Canter) Loeffler, published by the Boston Redevelopment Authority (1968-69); (3) Miscellaneous “tot lot,” <https://www.viennava.gov/Home/Components/FacilityDirectory/FacilityDirectory/14/67>.

Slide 9: Covers of selected Olmsted books published since 1973

Slide 10: (1) **Earth Day Poster**, <https://pioneersread.wordpress.com/2015/04/22/how-did-that-start-earth-week/>; (2) **New York, Central Park**, Earth Day celebration at Bethesda Terrace, Photo by Frederick Gutheim, 1973; First Earth Day Poster, by Robert Rauschenberg, April 22, 1970, rauschenbergfoundation.org.

Slide 11: **Dickerson, MD** (1) Frederick Gutheim and his sheep at Mt. Ephraim, Photo by Bob Loeffler, Oct. 1985; (2) Cover of Gutheim’s book, *The Potomac*, NY, Grosset & Dunlap, 1949; (3) Sugarloaf Mountain, Photo by Bob Loeffler, 1986; bottom left (4) Pond near “Stronghold,” Gordon Strong’s estate adjacent to Mt. Ephraim, Photo by Bob Loeffler, 1986; (5) Cover of Gutheim’s book, *Worthy of the Nation*, Johns Hopkins University Press, 1977, 2006; (6) Gutheim with historian Dana White at George Washington University where White presented Gutheim with album of testimonials from colleagues and friends on the occasion of his 80th birthday, March 3, 1988. Gutheim founded G.W.U.’s noted Historic Preservation Program in 1975.

Slide 12: **Dickerson, MD** (1) Frederick Gutheim and Jane Loeffler at Mt. Ephraim, Photo by Bob Loeffler, May 1973; (2) Rear of Gutheim house at Mt. Ephraim with sheep and shadow of photographer, Bob Loeffler, in foreground, 1988. Sugarloaf Mountain visible in the distance.

Slide 13: (1) **Liverpool, England**, Birkenhead Park, Loeffler Slide Collection; (2) Georges Seurat, *A Sunday on La Grande Jatte* (1884) Art Institute of Chicago; (3) Washington, DC, Bicyclists on Gallaudet Campus, Gallaudet Archives.

Slide 14: **Riverside, IL** (1) View of train station, The Cultural Landscape Foundation; (2) Water view, Frederick Gutheim, 1971, Loeffler Slide Collection; (3) Common, Frederick Gutheim, 1971, Loeffler Slide Collection; (4) Plan of Riverside, Olmsted Society of Riverside, <https://www.olmstedsociety.org/resources/maps-of-riverside/>; (5) Gas street lamp, Frederick Gutheim, 1971, Loeffler Slide Collection.

Slide 15: **Brookline, MA** (1) Olmsted Home/Office (Fairsted), Photo by Sean Fitzpatrick, 2018; (2) "Fairsted," Photo by Robert Burley, 1992, CCA.

Slide 16: (1) Gutheim presents Corita poster to George Hartzog, Director of the National Park Service, March 24, 1972, official NPS photograph; (2) Corita-decorated Dorchester gas tank, commissioned by Eli Goldston, president of Boston Gas in 1971, since replaced by replica; (3) Olmsted Sesquicentennial serigraph commissioned in 1971. Artist Corita Kent designed the posters and had them printed in California and shipped to Washington. She signed twenty out of 100. The Sesquicentennial sold the "posters" to raise operating funds. They were not really posters, but original silk-screened prints.

Slide 17: **Washington, DC, U.S. Capitol** (1) West Front steps toward the Mall; (2) curved masonry perimeter wall that forms edge of Capitol grounds at Constitution Avenue; (3) approach to Capitol grounds from the SW; (4) Grotto—all photos © Woodbridge Williams, 1978.

Slide 18: **Washington, DC, U.S. Capitol**, West Front, Photos © Woodbridge Williams, 1978. Articles reproduced from *The Washington Post* and *The New York Times*.

Slide 19: **Washington, DC, Frederick Law Olmsted/U.S.A. Exhibition brochure (excerpt)**
Text by Jane C. Loeffler, 1972.

Slide 20: (1) Carleton Watkins, Yosemite, stereograph; (2) Portrait of Frederick Law Olmsted, Sr. by John Singer Sargent, loaned by Biltmore Estate; (3) Olmsted's Plan for Central Park.

Slide 21: **At the National Gallery of Art:** (1) Plan of exhibition; (2) silk-screened custom napkin made for dinner opening night, commissioned by Mrs. Paul Mellon, showing Olmsted's tree moving machine, Prospect Park, in the collection of Jane Loeffler; (3) article from NYT, 10/17/72 by Ada Louise Huxtable; (4) photo of NGA exhibition showing plan for Riverside, IL. on right.

Slide 22: **New York, Central Park** (1) “Keep Off” graffiti image, 1970, <https://ephemeralnewyork.files.wordpress.com/2015/01/centralparkbridge1970snyt.png>; (2) Central Park Great Lawn restored, 1997, <https://www.centralparknyc.org/articles/central-park-history>; (3) Central Park bridge during “The Gates,” Photo by Bob Loeffler, 2005.

Slide 23: Signs and Statues. (1) **Asheville, NC. Arboretum.** Olmsted statue, dedicated on Earth Day, 2016. Photo by Bob Loeffler, 2019; (2) Olmsted National Historic Site, **Brookline, MA**; (3) Emerald Necklace, Olmsted Park, **Boston, MA**; (4) Olmsted Linear Park, City of **Atlanta, GA**.

Slide 24: **Washington, DC. Smithsonian National Zoo.** (1) Bench on Olmsted Walk. Photo by Jane Loeffler, 2020; (2) Lion. Photo by Bob Loeffler, 2011; (3) Lily pond. Photo by Jane Loeffler, 2021.

Slide 25: **Asheville, NC.** (1) Biltmore trees. Photo by Jane Loeffler; Below (2) **Hingham, MA.** World’s End trees on a hill. Photo by Jane Loeffler; Right top (3) Washington Monument viewed from the Capitol Terrace © Woodbridge Williams, 1978; Right bottom (4) “Biltmore,” The George W. Vanderbilt Estate, Asheville, NC,” Lee Friedlander, CCA, 1994.

Slide 26: **Artists and photographers interpreting Olmsted.**

Slide 27: **Artists and photographers interpreting Olmsted.**

Upper images, left to right:

1 ROCHESTER (“Highland Park, Rochester, NY”) (excerpt), Robert Burley, photographer, CCA, 1991.

2 BOSTON (“Arboretum, Boston, MA”) (excerpt), Lee Friedlander, photographer, CCA, 1988.

3 HINGHAM (“World’s End Looking East towards Hull”), (acrylic, 24"x36") Jane Loeffler, artist, 2017.

4 BOSTON (“The Country Park, Franklin Park”), Robert Burley, photographer, CCA, 1994.

Lower images, left to right:

5 HINGHAM (“World’s End Viewed from Hull”) (acrylic, 36" x 24") Jane Loeffler, artist, 2015.

6 NEW YORK (“Riverside Park”) Lee Friedlander, photographer, CCA, 1991.

7 WASHINGTON, DC (“Zoo Woods, Green Glow”) (acrylic, 24"x24") Jane Loeffler, artist, 2020.

Slide 28: **New York,** Central Park during exhibition of “The Gates,” (Christo & Jeanne Claude), Photo by Bob Loeffler, Feb. 2005.

Slide 29: **No. Easton, MA.** Inside Olmsted’s Rockery, Photo by Jane Loeffler, 2001.